

MONTHLY MEMBERSHIP PROGRESS REPORT

LOCATION INDIA

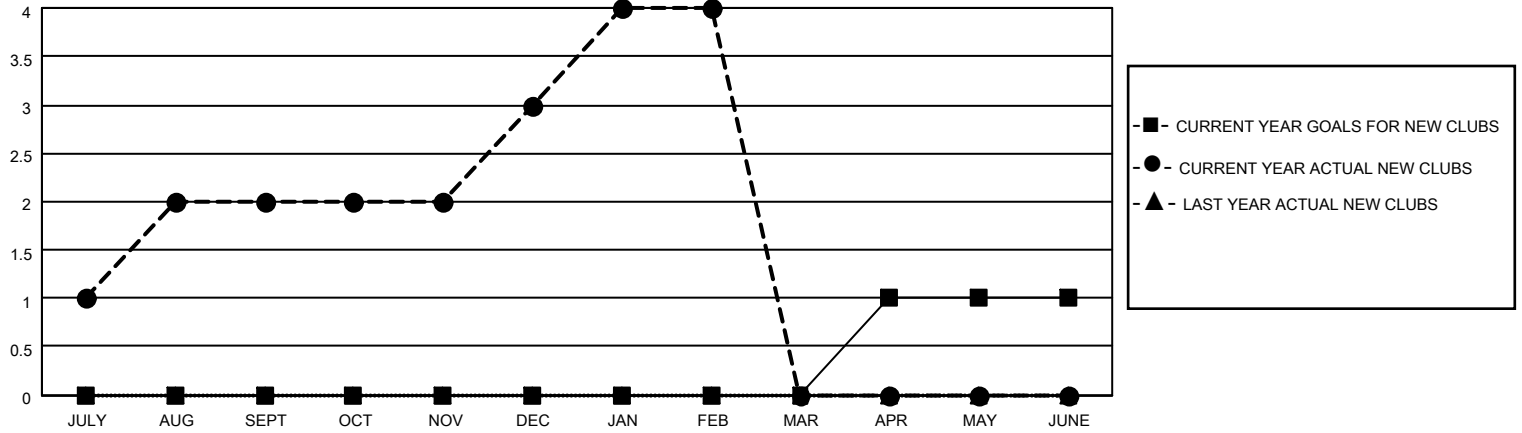
District 3232F2

Results as of: 2/28/2021

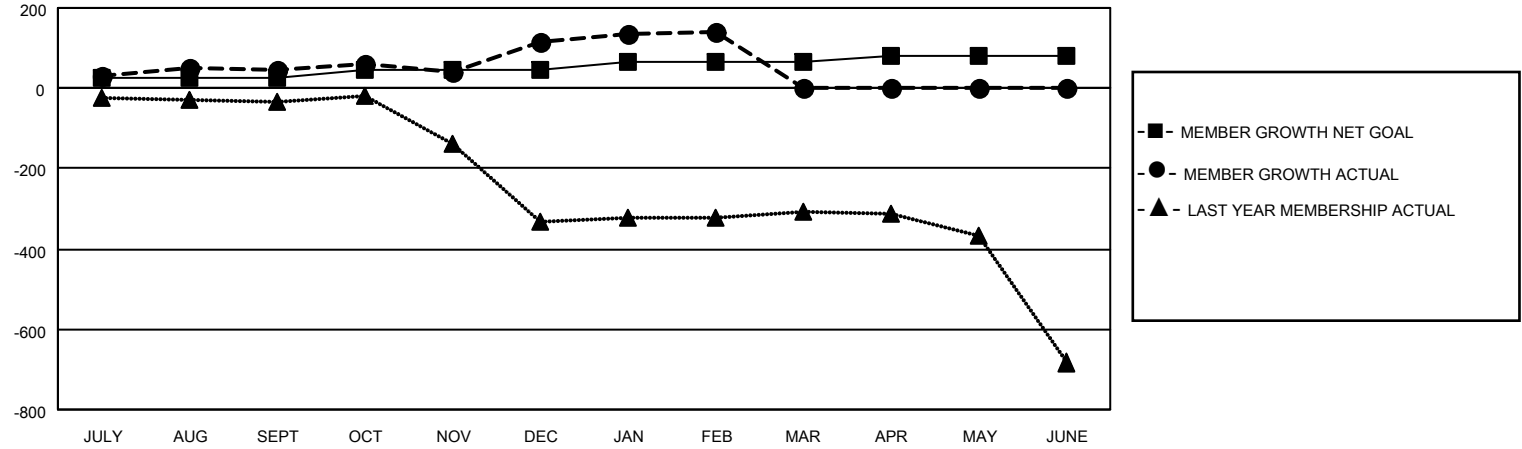
Clubs			
RESULTS FOR 2020-2021			
QUARTER	NEW CLUB GOAL	NEW CLUBS	DROPPED CLUBS
JULY/AUG/SEPT	0	2	0
OCT/NOV/DEC	0	1	0
JAN/FEB/MAR	0	1	3
APR/MAY/JUNE	1	0	0

Members			
RESULTS FOR 2020-2021			
QUARTER	MEMBER GROWTH NET GOAL	MEMBER GROWTH ACTUAL	DROPPED MEMBERS ACTUAL (including transfers)
JULY/AUG/SEPT	25	83	36
OCT/NOV/DEC	20	167	94
JAN/FEB/MAR	20	82	54
APR/MAY/JUNE	15	0	0

GOALS AND ACTUAL NEW CLUBS CUMULATIVE



GOALS AND ACTUAL MEMBERS CUMULATIVE



DROPPED CLUBS: 3	50 CLUBS OF 80 ADDED 1 OR MORE NEW MEMBERS	<u>GENDER DISTRIBUTION</u> MALE 1,916 (63.09%) FEMALE 1,121 (36.91%)
<u>DROPPED MEMBERS</u> DECEASED 11 CLUB CANCELLED 36 OTHER 137 <hr/> TOTAL 184	CLICK HERE FOR CUMULATIVE MEMBERSHIP DATA	TOTAL FAMILY UNIT MEMBERS 2,073 FAMILY MEMBERS PAYING HALF DUES 1,303